

**CHANGES AND CORRECTIONS
MADE BY US SAILING IN
THE US SAILING EDITIONS OF
*THE RACING RULES OF SAILING FOR 2017-2020***

This document will be updated between 1 November 2016 and 31 December 2020 to show any changes and corrections made by US Sailing.

~~*This is Version 1, which takes effect on 1 January 2017.*~~

This is Version 2, effective 1 May 2019.

For any queries, please e-mail the Race Administration Director at raceadmin@ussailing.org.

Corrections

Correction #1

Issued 1 November 2016

There is an error in rule G1.3(e) in the waterproof version only of the US Sailing rulebook.

At the top of page 122, the rule is incorrectly labeled (d).

The rule should read:

“(e) The national letters and sail number shall be displayed on both sides of a headsail...”

Change (d) at the top of page 122 to (e).

Correction #2

Issued 1 May 2019

There is an error in the lower course diagram for course TW in Appendix S on page 181 of *The Racing Rules of Sailing for 2017, Including US Sailing Prescriptions and Changes Made by World Sailing as of January 2018*, Second Printing, April 2019.

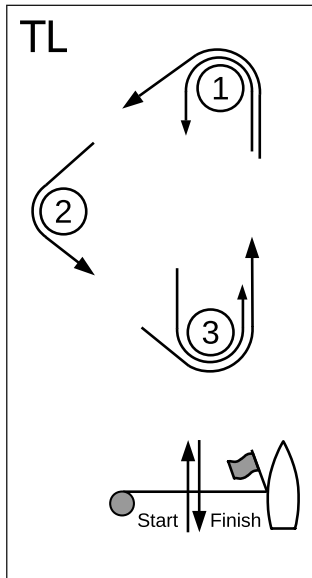
The corrected drawing is included in replacement page 181 on the next page of this document, which may be affixed over the erroneous page.

Below is the correct diagram for Course TW on page 181 of the April 2019 edition of *The Racing Rules of Sailing for 2017–2020 including US Sailing Prescriptions*.
 Corrections and revisions to *The Racing Rules of Sailing for 2017–2020* since 1 January 2018 are posted as needed on rules.ussailing.org.

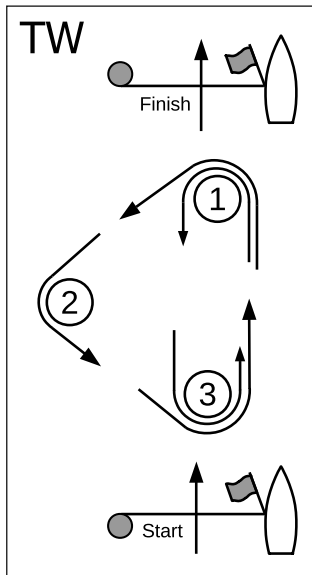


Appendix S

STANDARD SAILING INSTRUCTIONS



Course TL – Triangle, Leeward Finish	
Signal	Mark Rounding Order
TL2	Start – 1 – 2 – 3 – 1 – Finish
TL3	Start – 1 – 2 – 3 – 1 – 3 – 1 – Finish
TL4	Start – 1 – 2 – 3 – 1 – 3 – 1 – 3 – 1 – Finish



Course TW – Triangle, Windward Finish	
Signal	Mark Rounding Order
TW2	Start – 1 – 2 – 3 – Finish
TW3	Start – 1 – 2 – 3 – 1 – 3 – Finish
TW4	Start – 1 – 2 – 3 – 1 – 3 – 1 – 3 – Finish